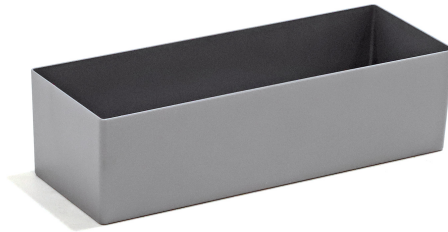


Image not found or type unknown.



Technical information

Productnumber : 38-EE3613-100-4

Product description

Plastic inserts ideal for accurately subdividing the contents in your storage box or drawer.

- The sturdy inserts ensure orderly storage of your products.
- The inserts are perfect for sorting tasks.
- Inserting and removing the bins is absolutely effortless.
- Suitable for storage bins with a height of 120 mm.
- Also suitable for subdividing drawers in dressers, work tables or desks.
- Insensitivity to common acids and alkalis

Specifications

Article arrangement: New

Version: insert tray

Walls: walls closed

Food-safe: yes

Length (mm): 365

Height (mm): 100

Weight (kg) 2.48

Temperature resistance: -5/+80°C

Type: accessories

Material: polystyrene

Floor: closed

Colour: grey

Width (mm): 133

Volume (ltr): 4.1

Type number: 38-EE

EAN Code (Gtin) 8719424223910

Scan the QR code for more information



KRUIZINGA.NL[®]
Opslag- en transportmiddelen

KRUIZINGA.DE[®]
Lager- und Transportmittel

KRUIZINGA.FR[®]
Stockage et ressources de transport

KRUIZINGA.COM[®]
Material handling equipment