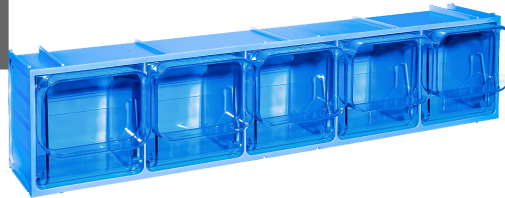
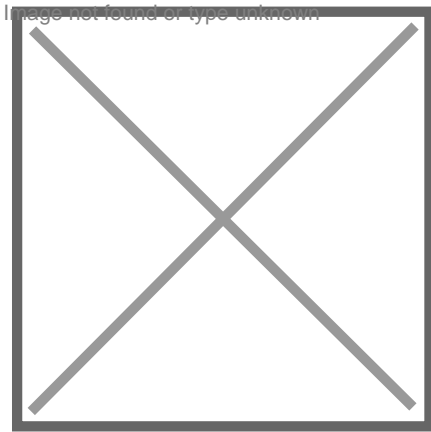


Image not found or type unknown



## Technical information

**Productnumber : 15-CB50-2S-W**

### Product description

Assortment cabinet with 5 tilting drawers. The blue (RAL 5017) housing of the assortment cabinet has a size of 600x155x175 mm. Inside, there are 5 tilting drawers made of polyethylene terephthalate (PET) with dimensions of 160x107x105 mm. The removable tilting drawers, measuring 160x107x105 mm, provide a structured storage solution for small parts, tools and accessories, keeping the workspace neat and organised. With a temperature resistance of -50°C to +150°C, this cabinet is suitable for extreme temperature environments, such as workshops where temperatures can vary. The polypropylene casing offers durability and shock resistance, making the cabinet suitable for demanding workshop environments where rough handling or sudden impact may occur. The polyethylene terephthalate (PET) drawers add extra strength and can withstand high loads, making the cabinet suitable for storing heavier tools and parts. Suitable for food contact.

### Specifications

Article arrangement: New  
Version: with 5 compartments  
Food-safe: yes  
Ral colour: 5017  
Internal length (mm): 90  
Internal width (mm): 86  
Internal height (mm): 62  
Type number: CB50  
EAN Code (Gtin) 8719424233957

Type: assortment cabinet  
Material: polypropylene  
Colour: blue  
Length (mm): 600  
Width (mm): 133  
Height (mm): 132  
Weight (kg) 1.2  
Temperature resistance: -50°C tot +150°C

Scan the QR code for more information



**KRUIZINGA.NL<sup>®</sup>**  
Opslag- en transportmiddelen

**KRUIZINGA.DE<sup>®</sup>**  
Lager- und Transportmittel

**KRUIZINGA.FR<sup>®</sup>**  
Stockage et ressources de transport

**KRUIZINGA.COM<sup>®</sup>**  
Material handling equipment